

Designer III Collection.

Continuum

Optic

Prism

Theory

Variant

Designer III Collection

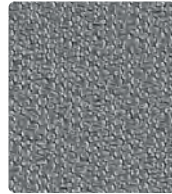
Continuum / Optic / Prism / Theory / Variant



THEORY
423-037 Alabaster



CONTINUUM
422-026 Dove



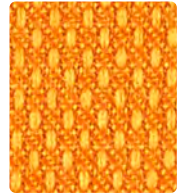
THEORY
423-016 Charcoal



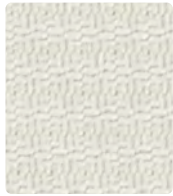
THEORY
423-017 Stone



CONTINUUM
422-002 Saffron



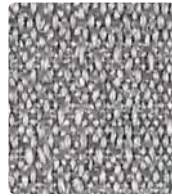
VARIANT
425-019 Orange Peel



PRISM
426-027 Zinc



PRISM
426-026 Dove



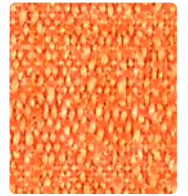
CONTINUUM
422-036 Iron



CONTINUUM
422-027 Stone



PRISM
426-002 Topaz



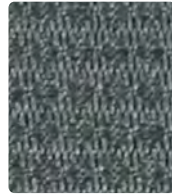
CONTINUUM
422-009 Mandarin



THEORY
423-026 Dove



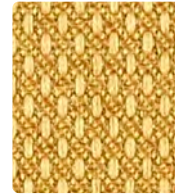
VARIANT
425-016 Flint



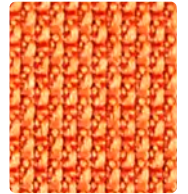
PRISM
426-016 Charcoal



PRISM
426-017 Stone



VARIANT
425-002 Mustard



OPTIC
424-009 Sunrise



VARIANT
425-017 Creme



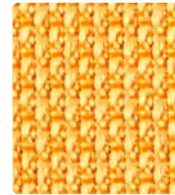
OPTIC
424-026 Elephant



OPTIC
424-006 Ash



THEORY
423-010 Mocha



OPTIC
424-019 Tangerine



THEORY
423-009 Mango



CONTINUUM
422-017 Almond



VARIANT
425-026 Aluminum



VARIANT
425-006 Carbon



PRISM
426-010 Mocha



CONTINUUM
422-007 Cafe Au Lait



PRISM
426-021 Tomato



VARIANT
425-007 Biscuit



CONTINUUM
422-016 Charcoal



CONTINUUM
422-006 Onyx



VARIANT
425-000 Chocolate



THEORY
423-007 Cafe Au Lait



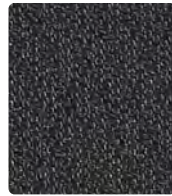
CONTINUUM
422-019 Brick



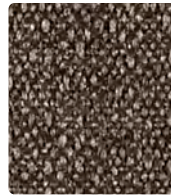
OPTIC
424-017 Fieldstone



OPTIC
424-016 Coal



THEORY
423-006 Onyx



CONTINUUM
422-000 Espresso



VARIANT
425-010 Cocoa



PRISM
426-019 Clay



OPTIC
424-007 Mushroom



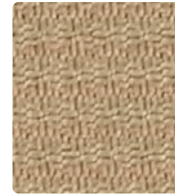
PRISM
426-006 Onyx



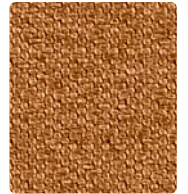
OPTIC
424-000 Brown Bear



THEORY
423-000 Espresso



PRISM
426-007 Cafe Au Lait

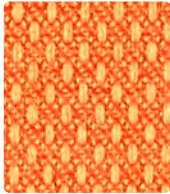


THEORY
423-019 Tobacco

Additional colors are available. Please refer to the Mayer Fabrics website.

Designer III Collection

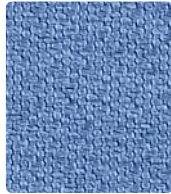
Continuum / Optic / Prism / Theory / Variant



VARIANT
425-009 Persimmon



THEORY
423-011 Rouge



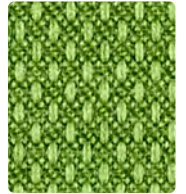
THEORY
423-024 Slate



PRISM
426-034 Cerulean



CONTINUUM
422-023 Citrine



VARIANT
425-013 Jungle



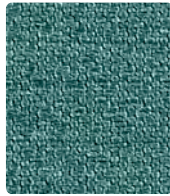
PRISM
426-009 Clementine



VARIANT
425-005 Aubergine



VARIANT
425-004 Ink



THEORY
423-044 Teal



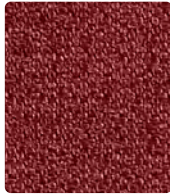
OPTIC
424-013 Green Apple



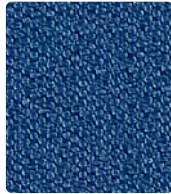
PRISM
426-003 Kale



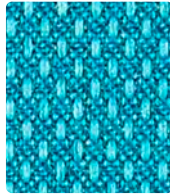
PRISM
426-011 Claret



THEORY
423-008 Port



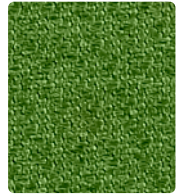
THEORY
423-014 Indigo



VARIANT
425-014 Prussian



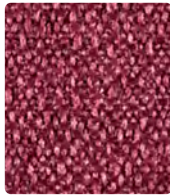
CONTINUUM
422-003 Spring



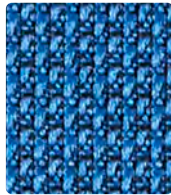
THEORY
423-003 Grass



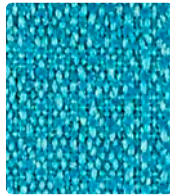
VARIANT
425-001 Barn Red



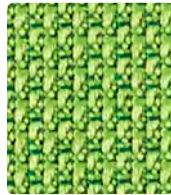
CONTINUUM
422-008 Beet



OPTIC
424-004 Yale



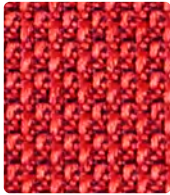
CONTINUUM
422-044 Ocean



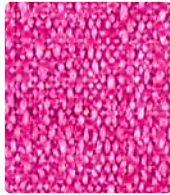
OPTIC
424-023 Springtime



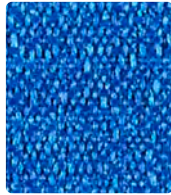
PRISM
426-013 Olive



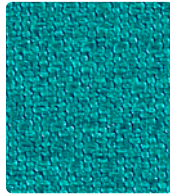
OPTIC
424-001 Red



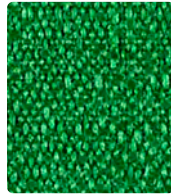
CONTINUUM
422-005 Magenta



CONTINUUM
422-014 Electric



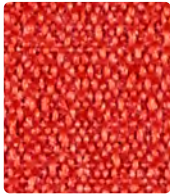
THEORY
423-034 Peacock



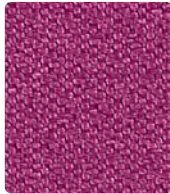
CONTINUUM
422-013 Emerald



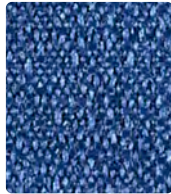
THEORY
423-023 Grove



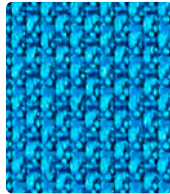
CONTINUUM
422-001 Lipstick



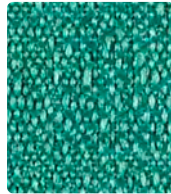
THEORY
423-015 Raspberry



CONTINUUM
422-004 Indigo



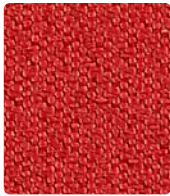
OPTIC
424-024 Ocean



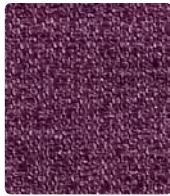
CONTINUUM
422-033 Pine



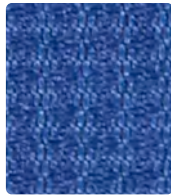
PRISM
426-023 Asparagus



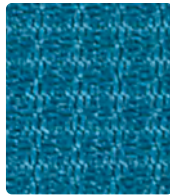
THEORY
423-001 Lipstick



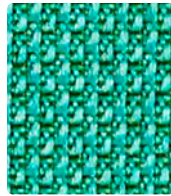
THEORY
423-005 Aubergine



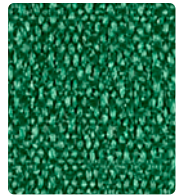
PRISM
426-004 Indigo



PRISM
426-024 Caribbean



OPTIC
424-033 Myrtle



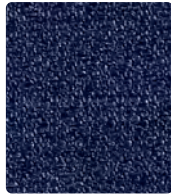
CONTINUUM
422-043 Bottle



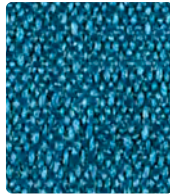
PRISM
426-001 Lipstick



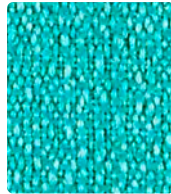
PRISM
426-005 Plum



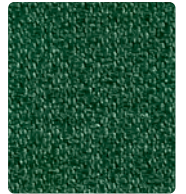
THEORY
423-004 Navy



CONTINUUM
422-024 Caribbean



CONTINUUM
422-034 Turquoise



THEORY
423-013 Evergreen

Additional colors are available. Please refer to the Mayer Fabrics website.

TECHNICAL INFORMATION

Designer III Collection

Pattern 54"	Content and Backing	Certifications	Weight/ Linear Yd.	Pattern Repeat	Finish	Abrasion Wyzenbeek	Light- Fastness	Flammability	Cleaning Code
CONTINUUM <i>Directional</i> <i>Multi-use*</i>	100% Post-Consumer Recycled Polyester Backing: Latex	GREENGUARD Gold	15 oz.	0.50" H, 0.59" V	Stain Repellent	130,000^ Double Rubs	40 hours	Cal. 117-2013 NFPA 260/UFAC Class 1 ASTM E84 (Unadhered) Class 1 or A	WS
OPTIC <i>Directional</i> <i>Multi-use*</i>	83% Post-Consumer Recycled Polyester, 17% Polyester Backing: Latex	GREENGUARD Gold	16.5 oz.	0.33" H, 0.20" V	Stain Repellent	185,000^ Double Rubs	40 hours	Cal. 117-2013 NFPA 260/UFAC Class 1 ASTM E84 (Unadhered) Class 1 or A	WS
PRISM <i>Directional</i> <i>Multi-use*</i>	75% Post-Consumer Recycled Polyester 25% Polyester Backing: Latex	GREENGUARD Gold	14.5 oz.	0.17" H, 0.20" V	Stain Repellent	105,000^ Double Rubs	40 hours	Cal. 117-2013 NFPA 260/UFAC Class 1 ASTM E84 (Unadhered) Class 1 or A	WS
THEORY <i>Directional</i> <i>Multi-use*</i>	75% Post-Consumer Recycled Polyester 25% Polyester Backing: Latex	GREENGUARD Gold	14.5 oz.	0.17" H, 0.39" V	Stain Repellent	150,000^ Double Rubs	40 hours	Cal. 117-2013 NFPA 260/UFAC Class 1 ASTM E84 (Unadhered) Class 1 or A	WS
VARIANT <i>Directional</i> <i>Multi-use*</i>	75% Post-Consumer Recycled Polyester 25% Polyester Backing: Latex	GREENGUARD Gold	14.5 oz.	0.17" H, 0.20" V	Stain Repellent	140,000^ Double Rubs	40 hours	Cal. 117-2013 NFPA 260/UFAC Class 1 ASTM E84 (Unadhered) Class 1 or A	WS

REDUCED ENVIRONMENTAL IMPACT

These products are GREENGUARD Gold Certified for low chemical and particle emissions to UL standard UL 2818 and may contribute to LEED certification. For complete information visit mayerfabrics.com and UL.com/gg.

Continuum



Eco-System®
Sustainable. Attainable at Mayer Fabrics.

The Eco-System icon indicates 100% recycled content.

CARE AND CLEANING INFORMATION

WS: Water/Solvent Cleaner

DYE TRANSFER DISCLAIMER

Certain clothing and accessory dyes (such as those used on denim jeans) may migrate to lighter colors. This phenomenon is increased by humidity and temperature and is irreversible. Mayer Fabrics will not assume responsibility for dye transfer caused by external contaminants. Please check compatibility when using this product in combination with painted or varnished surfaces.

ADDITIONAL INFORMATION

CAL TB 133: All patterns may comply with California Technical Bulletin 133 when combined with appropriate components.

^Abrasion: Multiple factors affect fabric durability and appearance retention, including end-user application and proper maintenance. Wyzenbeek results above 100,000 double rubs have not been shown to be a reliable indicator of increased fabric lifespan.

***All Patterns:** A multi-use fabric that can be used for upholstery, panels, wrapped walls, and acoustic.

Custom Capabilities: All patterns can be custom colored. Minimum yardage applies.

Digital Swatch Card Color Matching: Due to color variations on different monitors and color printers, actual swatch colors may vary slightly. Please request a memo sample from Mayer Fabrics to ensure proper color representation.

Specifications: Specifications are correct at the time of printing. Additional specifications are available on our website.



These fabrics meet or exceed these ACT performance guidelines.
Certification Marks owned by ACT



Water and Stain
Repellent Finish



This 100% polyester fabric is included in the Underwriter's Laboratory Fabric Recognition Program. Additional testing of this U.L. recognized component is not required on approved panels from participating manufacturers.



T 800.363.8954
info@nightingalechairs.com
www.nightingalechairs.com

T 317.267.2626 or 800.428.4415 F 317.267.2629 or 877.7SAMPLE
www.mayerfabrics.com
©2019 Mayer-Paetz, Inc.



NCDES3CCD
51219