

Designer II Collection.

Bali
Caressa
Fedora
Havana
Mingle
Rumba
Sydney
Tango

 **Nightingale**

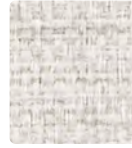
nightingalechairs.com

Designer II Collection

Bali / Caressa / Fedora / Havana / Mingle / Rumba / Sydney / Tango



RUMBA
462-007 Bisque



MINGLE
MG-047 Oyster



FEDORA
621-046 Light Grey



CARESSA
CA-076 Aluminum



HAVANA
459-017 Mocha



BALI
457-007 Alabaster



CARESSA
CA-117 Sand



FEDORA
621-017 Fawn



MINGLE
MG-020 Fog



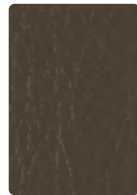
RUMBA
462-017 Fossil



TANGO
460-006 Flint



MINGLE
MG-000 Sable



CARESSA
CA-080 Bark



FEDORA
621-000 Mink



RUMBA
462-016 Char



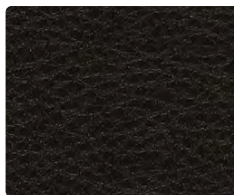
FEDORA
621-010 Espresso



SYDNEY
456-000 Taupe



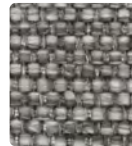
BALI
457-016 Metal



CARESSA
CA-006 Black



BALI
457-006 Jet



HAVANA
459-026 Metal



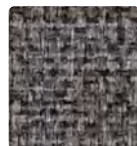
MINGLE
MG-016 Sterling



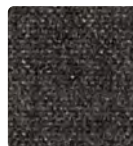
SYDNEY
456-006 Iron



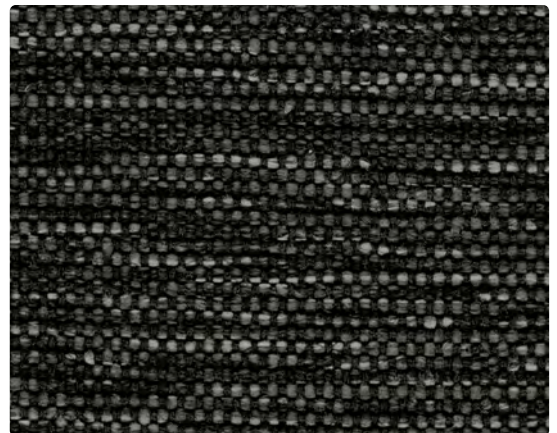
FEDORA
621-016 Charcoal



MINGLE
MG-006 Charcoal



FEDORA
621-006 Bitumen



HAVANA
459-016 Storm

Additional colors are available. Please refer to the Mayer Fabrics website.

Designer II Collection

Bali / Caressa / Fedora / Havana / Mingle / Rumba / Sydney / Tango



SYDNEY
456-017 Butterscotch



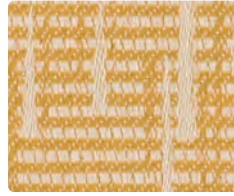
BALI
457-002 Sandstone



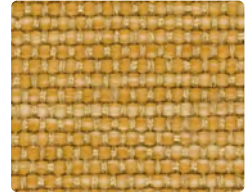
CARESSA
CA-097 Flax



MINGLE
MG-002 Straw



RUMBA
462-002 Butterscotch



HAVANA
459-002 Saffron



MINGLE
MG-019 Persimmon



FEDORA
621-019 Tangelo



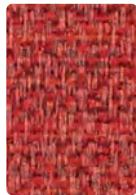
HAVANA
459-009 Mandarin



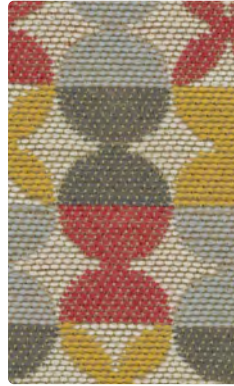
FEDORA
621-009 Persimmon



CARESSA
CA-051 Paprika



MINGLE
MG-001 Rouge



TANGO
460-011 Coral



RUMBA
462-009 Cinnabar



SYDNEY
456-001 Crimson



TANGO
460-001 Sangria



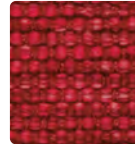
SYDNEY
456-009 Tangerine



BALI
457-009 Terra



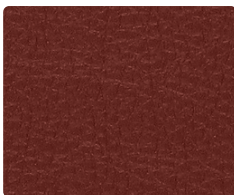
FEDORA
621-011 Tomato



HAVANA
459-001 Cranberry



CARESSA
CA-011 Lipstick



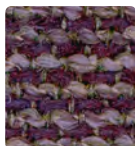
CARESSA
CA-001 Ruby



RUMBA
462-001 Cardinal



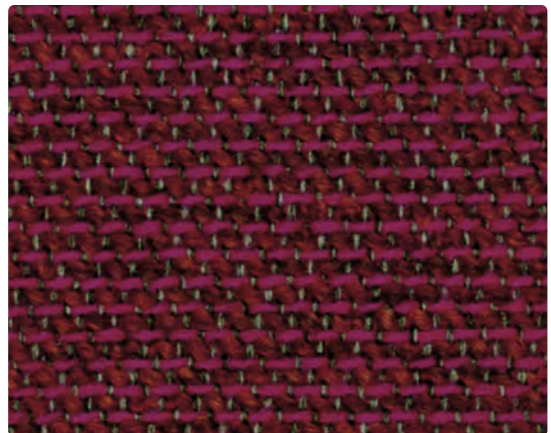
FEDORA
621-008 Plum



BALI
457-005 Aubergine



MINGLE
MG-008 Magenta

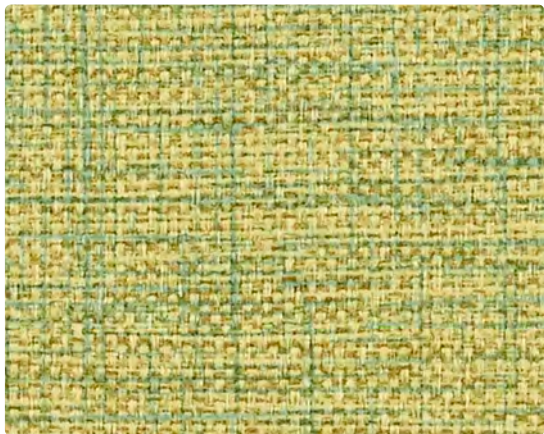


BALI
457-011 Merlot

Additional colors are available. Please refer to the Mayer Fabrics website.

Designer II Collection

Bali / Caressa / Fedora / Havana / Mingle / Rumba / Sydney / Tango



MINGLE
MG-003 Aloe



FEDORA
621-013 Citron



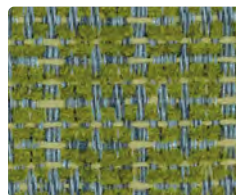
MINGLE
MG-033 Algae



CARESSA
CA-123 Parsley



BALI
457-003 Meadow



SYDNEY
456-003 Leaf



MINGLE
MG-023 Turquoise



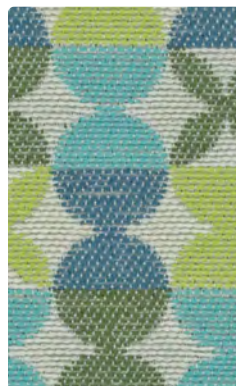
FEDORA
621-043 Aquamarine



HAVANA
459-023 Sea



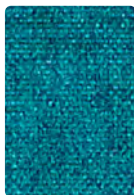
RUMBA
462-003 Lime



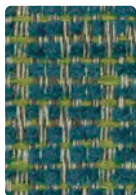
TANGO
460-013 Limeade



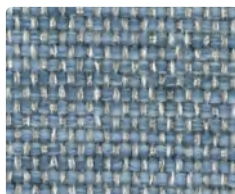
HAVANA
459-014 Peacock



FEDORA
621-053 Aegean



SYDNEY
456-023 Pine



HAVANA
459-024 Sky



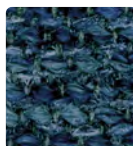
CARESSA
CA-124 Skipper



SYDNEY
456-004 Ocean



BALI
457-014 Ocean



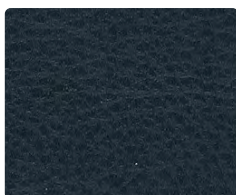
BALI
457-004 Indigo



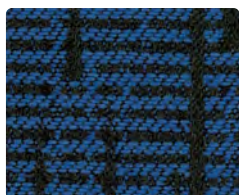
CARESSA
CA-064 Cerulean



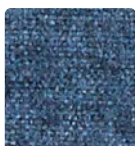
MINGLE
MG-014 Sky



CARESSA
CA-004 Navy



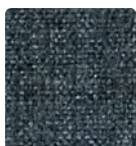
RUMBA
462-004 Cobalt



FEDORA
621-014 Indigo



MINGLE
MG-004 Indigo

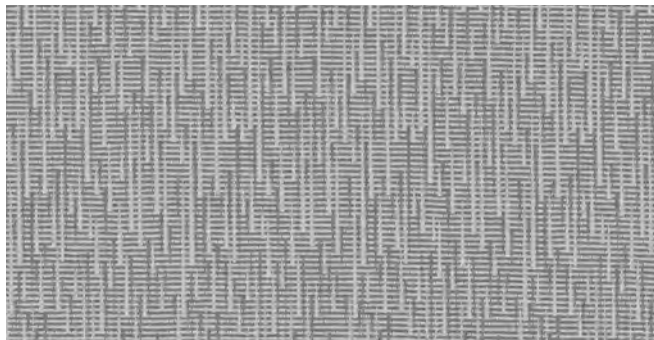


FEDORA
621-004 Midnight

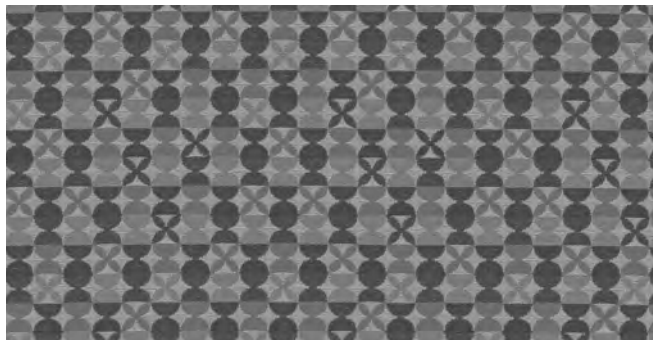


TANGO
460-014 Harbor

Additional colors are available. Please refer to the Mayer Fabrics website.



RUMBA – Repeat: 3.7 in/9.40 cm H, 6.625 in/16.83 cm V
Random Match



TANGO – Repeat: 4.8 in/12.19 cm H, 4.8 in/12.19 cm V

CARE AND CLEANING INFORMATION

W: Water-Based Cleaner WS: Water/Solvent Cleaner S: Solvent Cleaner IC: Inherently Cleanable
CFC: Coated Fabrics Cleaning – Refer to Mayer website for complete cleaning info.

BC: Bleach Cleanable – 1 part bleach, 9 parts water = 10% bleach, 90% water solution. Do not clean/disinfect fabric for longer than 10 minutes using the 10% bleach solution. Always rinse promptly with clean water after applying the bleach solution. Failure to do so will void any and all warranties.

For additional care and cleaning information by pattern, please refer to the Mayer Fabrics website.

DYE TRANSFER DISCLAIMER

Certain clothing and accessory dyes (such as those used on denim jeans) may migrate to lighter colors. This phenomenon is increased by humidity and temperature and is irreversible. Mayer Fabrics will not assume responsibility for dye transfer caused by external contaminants. Please check compatibility when using this product in combination with painted or varnished surfaces.

TECHNICAL INFORMATION

Designer II Collection

Pattern 54"	Content and Backing	Certifications	Weight/ Linear Yd.	Pattern Repeat	Finish	Abrasion Wyzenbeek	Light-Fastness	Flammability	Cleaning Code
BALI <i>Directional</i>	98% Olefin, 2% Polyester Backing: Acrylic	GREENGUARD Gold	19.968 oz.	0.313" H, 0.125" V Non-Matching	Stain Repellent – PFOA & PFOS Free	51,000 Double Rubs	40 hours	Cal. 117-2013 NFPA 260/UFAC Class 1	WS, BC
CARESSA	80% Vinyl - Phthalate Free face, 20% Polyester backing	GREENGUARD Gold	29 oz.	None	Soil & Stain Resistant Top Coat with Ink Resistant Technology	650,000 [^] Double Rubs	1000 hours	Cal. 117-2013 NFPA 260/UFAC Class 1 FMVSS 302	WS, BC, CFC
FEDORA <i>Directional Multi-use*</i>	100% Polyester Backing: Polyester	GREENGUARD Gold	17.2 oz.	None	Stain Repellent – PFOA Free	100,000 Double Rubs	40 hours	Cal. 117-2013 NFPA 260/UFAC Class 1 ASTM E84 (Unadhered) Class 1 or A	W
HAVANA <i>Directional</i>	70% Polypropylene, 30% Polyester Backing: Latex	GREENGUARD Gold	16.04 oz.	None	Inherently Cleanable (refer to mayerfabrics.com/vivalife)	100,000 Double Rubs	40 hours	Cal. 117-2013 NFPA 260/UFAC Class 1	W, BC, IC
MINGLE <i>Directional</i>	80% Vinyl - Phthalate Free face, 20% Polyester backing	GREENGUARD Gold	30 oz.	None	Soil & Stain Resistant Top Coat with Ink Resistant Technology	250,000 [^] Double Rubs	300 hours	Cal. 117-2013 NFPA 260/UFAC Class 1 FMVSS 302	WS, BC, CFC
RUMBA <i>Directional</i>	100% Polyester Backing: Acrylic	GREENGUARD Gold	10.97 oz.	3.7" H, 6.625" V Random Match	Stain Repellent – PFOA & PFOS Free	55,000 Double Rubs	40 hours	Cal. 117-2013 NFPA 260/UFAC Class 1	S
SYDNEY <i>Directional</i>	52% Recycled Polyester (34% Pre-/18% Post-Consumer) , 48% Polyester Backing: Acrylic	GREENGUARD Gold	13.44 oz.	0.938" H, 0.842" V Non-Matching	Nano-Stain Repellent – PFOA & PFOS Free	63,000 Double Rubs	40 hours	Cal. 117-2013 NFPA 260/UFAC Class 1	WS, BC
TANGO <i>Directional</i>	100% Polyester Backing: Acrylic	GREENGUARD Gold	17.27 oz.	4.8" H, 4.8" V	Stain Repellent – PFOA & PFOS Free	80,000 Double Rubs	40 hours	Cal. 117-2013 NFPA 260/UFAC Class 1	S

REDUCED ENVIRONMENTAL IMPACT

These products are GREENGUARD Certified or Gold Certified for low chemical and particle emissions to UL standard UL 2818 and may contribute to LEED certification. For complete information visit mayerfabrics.com and UL.com/gg.

Caressa

This product does not contain any exposure risks associated with the chemicals in Prop 65
No added antibacterial chemicals Lead Free BPA Free/TRIS Free/Formaldehyde Free No added Flame Retardant Chemicals Phthalate Free
Heavy Metal/Conflict Mineral Free

Havana

OEKO-TEX® Certified

Mingle

No FR Additives Phthalate Free Lead Free BPA Free/TRIS Free/Formaldehyde Free Does not contain Conflict Minerals

ADDITIONAL INFORMATION

CAL TB 133: All patterns may comply with California Technical Bulletin 133 when combined with appropriate components.

^Abrasion: Multiple factors affect fabric durability and appearance retention, including end-user application and proper maintenance. Wyzenbeek results above 100,000 double rubs have not been shown to be a reliable indicator of increased fabric lifespan.

+Fedora: A multi-use fabric that can be used for upholstery, panels, wrapped walls, and acoustic.

Custom Capabilities: All patterns can be custom colored. Minimum yardage applies.

Digital Swatch Card Color Matching: Due to color variations on different monitors and color printers, actual swatch colors may vary slightly. Please request a memo sample from Mayer Fabrics to ensure proper color representation.

Specifications: Specifications are correct at the time of printing. Additional specifications are available on our website.



These fabrics meet or exceed these ACT performance guidelines.
Certification Marks owned by ACT

Bali, Fedora, Rumba, Tango



Fedora

This 100% polyester fabric is included in the Underwriter's Laboratory Fabric Recognition Program. Additional testing of this U.L. recognized component is not required on approved panels from participating manufacturers.



T 800.363.8954
info@nightingalechairs.com
www.nightingalechairs.com

T 317.267.2626 or 800.428.4415 F 317.267.2629 or 877.7SAMPLE
www.mayerfabrics.com
©2019 Mayer-Paetz, Inc.



NCDES2CCD
51219